



### Félixfürdő

Long-standing bathing areas and the water lily



It is a resort with a history of more than 200 years. Here you will find the "lotus of Nagyvárád", which, was written in a poem.

#### Sights:

- Félix Bath - Apollo Beach (Thermal)
- Félix Bath-Saint Archangels Wooden Church
- Félix Bath-Lake
- Bishop Bath Pecze Creek Natural Reserve
- Bishop's Bath
- Karst Formations of Somló Hill

### Ópusztaszer

History from many angles



The memorial park offers attractions according to a variety of themes: the time of conquest, the stud and the yurts. The peasant lifestyle is represented by the open air museum. The whole family can spend a meaningful day here.

#### Sights:

- AKHAL-teke stud
- Arpad Memorial
- Csete Yurts
- Feszty Panorama and exhibitions of the visitor centre
- Monastery
- Open-air ethnographic museum

### Vértop

The gorges, the ravines and the rocky landscapes have healing effect



You can admire waterfalls and rock formations during the tour here. Several hiking trails leading to the attractions, and in a mór country house you can see a craft show.

#### Sights:

- Scarisoarsa ice cave of Aranyosfő
- Black rocks via ferrata
- Country House of Patrahaitest
- Waterfall of Patrahaitest Rust gap
- Szegyesd Gorge
- Vértop-Ski Slopes
- Vértop Resort

### Sándorfalva

The sound of citera appears in the movies



The famous native of the village is Sándor Budai, a citera musician; the settlement not only preserves his memory, but also gives us the style of the citera instrument and its sound characteristic of the settlement.

#### Sights:

- Sándor Budai's apartment building and legacy
- Csókerge
- Maria Day Farewell and Fair
- Nádas Lake
- Castle and Castle Garden of Palavicin, ornamental tomb
- Citera game and foal-head citera of Sándorfalva
- Broom binding, broom binding machine

### Menyháza

Peacetime villas tell the story of the past in the vicinity of medicinal springs.



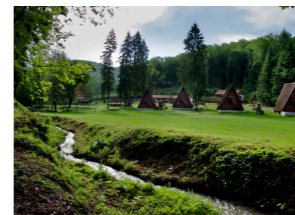
The built monuments, the sights of nature, the karst caves are impressive. In addition to the villas of the bathing area, the castles of Dézna and Borosjenő bear witness to the past.

#### Sights:

- Mineral water sources of Apatelek
- Castle, arboretum of Borosjenő
- Dézna Castle
- Menyháza-White and Red Marble Mine
- Menyháza-Bath Spring Cave, Jókai Sinkhole Cave, Bat Cave
- Menyháza-Granite Iron Melting Furnace
- Menyháza-Paradeiser villa
- Fairy Rose Villa
- Papanasi

### Kaszoja

It offers sights from memories of the Turkish era to modern sculptures.



Mariaradna is a pilgrimage site and the wine region of Ménes has a historic past, and the newer attractions are represented by the Statue Park. Guests who want to bathe and relax both find what they are looking for. Ioan Slavici the famous roman writer was born and lived here.

#### Sights:

- Györök-Tram
- Kaszoja Statue Park
- Kaszoja tourist centre,
- Lilafürdő Bath
- Solymos Castle
- Lippa-Turkish Bazaar
- Mária Radna
- Ópálos/Paulis-Monumental Eroilor
- Ópálos- Ménesi wine region, Balla winery
- Világos-Bohus Castle Building, exhibition by Romanian writer Ioan Slavici
- Castle of Világos

### Hegykőzsztentmiklós

Castles, mansions and country houses evoke the past, and pottery is still cultivated to this day.



The past of the area is told by country houses, cellar rows and museum exhibitions. Its natural treasures – medicinal water and soil conditions – owe its pottery and thermal baths.

#### Sights:

- Country House of Galospeter
- Hegykőzsztentmiklós-thermal bath
- Pottery of Hargita, Albis
- Ottoman-Komáromy Mansion
- Szalacs country house, cellars
- Székelyhid- Striped Lake
- Székelyhid- Museum: Fishing and wild catch in Érmellék - Sándor Wilhelm
- Stubenberg Castle
- Székelyhid- cellar row
- Szentimre fountain, mineral water source
- Holy Right-Catholic Church pilgrimage site.

### Ásotthalom

Farms, forests and „highwaymen legends” on the Homokhát.



Ferenc Kiss's expertise and perseverance in forest engineering are praised by the forests built around the settlement. We can learn a lot about the farm lifestyle by visiting the village.

#### Sights:

- The complex of the Bedő Albert Forestry School and College of Ásotthalom
- Back Chapel and forest resting place
- Ásotthalom-Batata
- Gárgyan Forest Recreation Park
- Damsori Farm Museum and Community House
- Ferenc Kiss is a certified forest engineer, the father of the forests of Szeged and his farmhouse of Ásotthalom
- Landscape Protection District and The Miracle Meadow of Körös-brook
- Rákosi Bunkers
- Sándor Rózsa Experience House
- Farm school education program

## Choose a lifestyle, a lifelong adventure in the orienteering

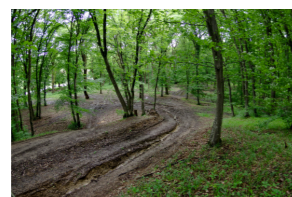
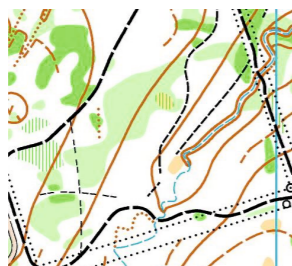
The orienteer gets a special map of the terrain. Triangle indicates the start, the double hoop is the finish. The checkpoints are marked by a circle between the start and the finish, which are also connected. The order of the point catch is obligatory, if a person misses a point, they are disqualified from the tournament. You have to navigate between the points with just a map, there's no other help in the field. You can get out of the finish zone to the start zone by appointed beat. The runners are going to only get their map at the moment of the start. Everyone has a compass, which is necessary for correct map rotation and directions. Runners on the same track depart every 2-3 minutes to complete the track individually. The person who takes the points in the shortest time wins.

### More information about the sport:

FRO  
<http://www.orienteering.ro/welcomeROM.html>  
MTFSZ [www.mtfsz.hu](http://www.mtfsz.hu) Here you can apply for webinars, promotional events to try the run and the final conference: Facebook page: Tájékoztató futás - O IKT Sport Egészség Turizmus Ifjúság And if you want to be an orientation runner, look for **Dániel Barkász** (+40742256615) or **Tibor Gera** (+36703348367)

### Félix Fürdő

Baile Felix  
Baile Felix  
-Dealul Sumuleul

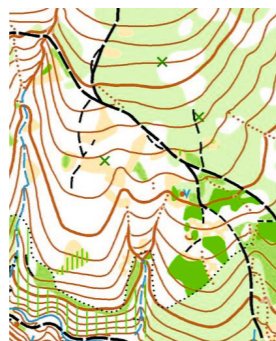


City map, it is located in a nice area, has a well-run terrain, smaller topography elements, perfect for short-distance races, trainings, orienteering shows and maprun runs

It has a variety of technically difficult terrains, so it can be used for larger competitions.

**you can try it:**  
2020.03.07. 12.00 óra;  
Hullám fürdő GPS:  
46.995409, 22.005738,

**Kaszoja**  
Casoia – Araneag



Parts of the terrain are physically and technically challenging, with varied details, while in some parts it is quite bushy, hiding huge artworks.

**you can try it:**  
2020.04.04. 12.00 óra;  
Kaszojai tábor GPS:  
46.216336, 21.751334

### Ásotthalom

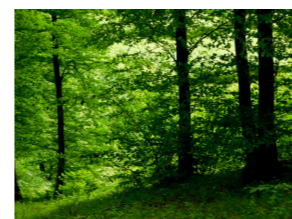
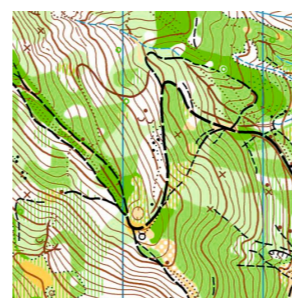
Ásotthalom Ligetes  
Ásotthalom Rózsa Fa  
Ásotthalom Rácsos Erdő



Typical lowland terrain with a varied field cover with dense road network.

**you can try it:**  
2020.04.21. 14.00 óra;  
Ásotthalom, Bedő  
Erdészeti Iskola. GPS:  
46.205571, 19.774937

**Menyháza**  
Moneasa - Izoi

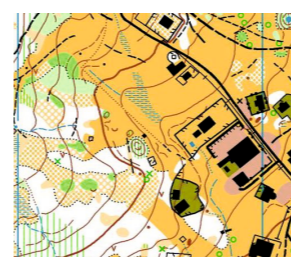


The topography is very rich, with huge level differences, large plateau, and all this also gives you the opportunity to host big competitions

**you can try it:**  
2020.04.05. 12.00 óra;  
Parc Hotel GPS:  
46.462734, 22.259593

### Vértop

Vértop



It is situated at an altitude of 1100 m, where steeper hillsides, pine forests, can be found, suitable for setting more technical paths.

**you can try it:**  
2020.04.25. 13.00 óra;  
Ady menedékház GPS:  
46.516252, 22.675332

### Ópusztaszer

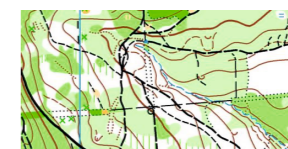
National Historical Memorial  
Park of Ópusztaszer



Park map with many buildings, objects, sculptures and rest stop.

**you can try it:**  
2020.04.12. 10.00 óra;  
Nemzeti Történeti  
Emlékpark GPS:  
46.487146, 20.093967

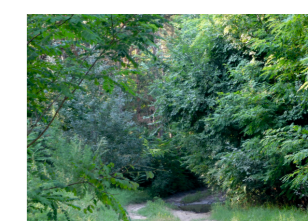
**Hegyközszentmiklós**  
Sannicolau de Munte  
- Saniob



Varied topography, deep detailed valleys and flat ridges pass through the pilgrimage route.

**you can try it:**  
2020.04.08. 12.00 óra;  
Berek GPS: 47.297020,  
22.131343

**Sándorfalva**  
Sándorfalva Bánya-Strand  
Sándorfalva Vakondtúrás



Typical lowland terrain with a varied field cover with dense road network.

**you can try it:**  
2020.04.07. 14.00 óra;  
Sándorfalvi Sportpálya,  
Sport u., GPS: 46.367419,  
20.103921